



---

# Waste Management December 2020 Report to the City of Texarkana, TX

---

Jarrold Miller  
District Manager

---

Doug Sims  
Public Sector Solutions Manager

---



# Table of Contents



Collection Services.....	3
What It Means To Think Green.....	4
Customer Service Summary.....	5
WM Key Community Performance Indicators.....	6

## Collection Services



Waste Management is proud to be the chosen service provider for the City of Texarkana. Currently, WM provides once a week residential refuse, recycling and yard waste collections. We look forward to continuing to work with the city.

In the tables below, residential materials collected are separated by type and measured in tons collected per month.

### Materials Sent to Landfill (in tons)

Service	JAN	FEB	MAR	APR	MAY	JUN	JUL	AUG	SEP	OCT	NOV	DEC	TOTAL	AVG
Residential Trash	878	730	927	978	936	960	1,010	897	986	944	909	1,003	11,158	930

### Materials Diverted from Landfill (in tons)

Service	JAN	FEB	MAR	APR	MAY	JUN	JUL	AUG	SEP	OCT	NOV	DEC	TOTAL	AVG
Residential Recycling	114	79	106	95	157	148	134	127	54	0	0	0	1,014	113
Residential Yard Waste	98	81	159	179	157	123	134	111	84	99	116	102	1,443	120
<b>Total</b>	<b>212</b>	<b>160</b>	<b>265</b>	<b>274</b>	<b>314</b>	<b>271</b>	<b>268</b>	<b>238</b>	<b>138</b>	<b>99</b>	<b>116</b>	<b>102</b>	<b>2,457</b>	<b>205</b>

### Total Materials Collected (in tons)

	JAN	FEB	MAR	APR	MAY	JUN	JUL	AUG	SEP	OCT	NOV	DEC	TOTAL	AVG
<b>Total</b>	<b>1,090</b>	<b>890</b>	<b>1,192</b>	<b>1,252</b>	<b>1,250</b>	<b>1,231</b>	<b>1,278</b>	<b>1,135</b>	<b>1,124</b>	<b>1,043</b>	<b>1,025</b>	<b>1,105</b>	<b>13,615</b>	<b>1,135</b>

### Diversion Rate

	JAN	FEB	MAR	APR	MAY	JUN	JUL	AUG	SEP	OCT	NOV	DEC	TOTAL	AVG
<b>Residential Diversion Rate</b>	<b>19%</b>	<b>18%</b>	<b>22%</b>	<b>22%</b>	<b>25%</b>	<b>22%</b>	<b>21%</b>	<b>21%</b>	<b>12%</b>	<b>9%</b>	<b>11%</b>	<b>9%</b>	<b>18%</b>	<b>18%</b>

## What It Means To Think Green

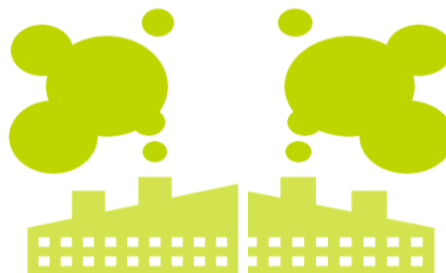
Resources Diverted from Landfill (In Tons) **														
Material	JAN	FEB	MAR	APR	MAY	JUN	JUL	AUG	SEP	OCT	NOV	DEC	TOTAL	AVG
Newspaper	91	63	85	76	126	118	107	102	43	0	0	0	811	90
Aluminum	2	2	2	2	3	3	3	3	1	0	0	0	20	2
Plastic - Mixed	17	12	16	14	24	22	20	19	8	0	0	0	152	17
Tin	3	2	3	3	5	4	4	4	2	0	0	0	30	3
<b>Total</b>	<b>114</b>	<b>79</b>	<b>106</b>	<b>95</b>	<b>157</b>	<b>148</b>	<b>134</b>	<b>127</b>	<b>54</b>	<b>0</b>	<b>0</b>	<b>0</b>	<b>1,014</b>	<b>113</b>
Yard Waste	98	81	159	179	157	123	134	111	84	99	116	102	1,443	120
<b>Grand Total</b>	<b>212</b>	<b>160</b>	<b>265</b>	<b>274</b>	<b>314</b>	<b>271</b>	<b>268</b>	<b>238</b>	<b>138</b>	<b>99</b>	<b>116</b>	<b>102</b>	<b>2,457</b>	<b>205</b>

*\*\*Based on aggregate data from Materials Recovery Facility*

The City of Texarkana has diverted **2,457 tons** from the landfill, equivalent to...



conserving  
**372,714 gallons of gasoline**



greenhouse gas emissions reduction of  
**3,312 metric tons of CO2 equivalent**

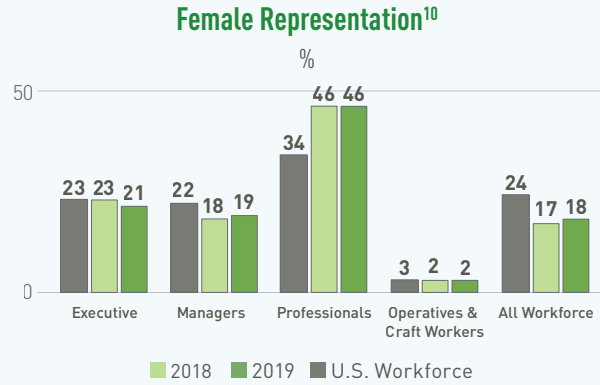
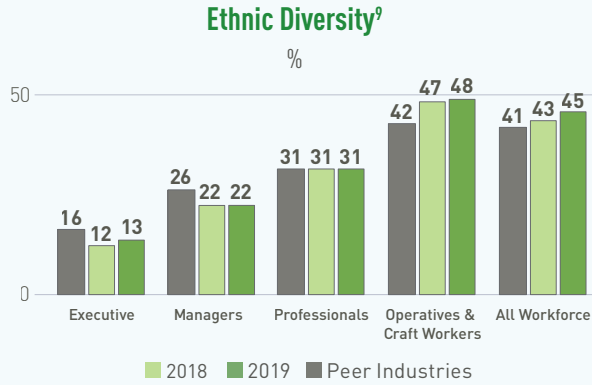


removing the annual emissions from  
**716 cars off the road**



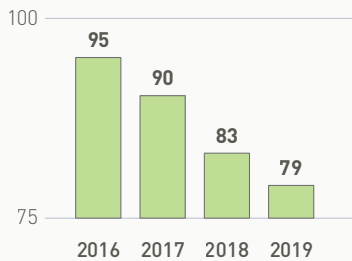
## Key Performance Indicators—Community

### Inclusion & Diversity



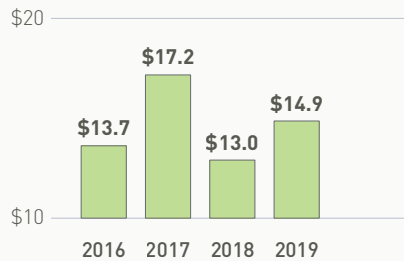
### Social Impact

#### Number of Wildlife Habitat Programs

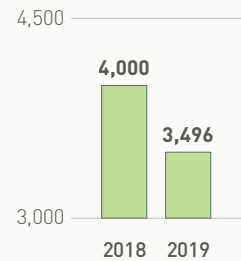


#### Charitable Giving<sup>11</sup>

In Millions



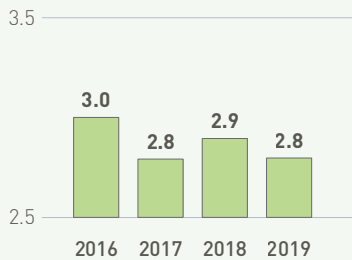
#### Community Events Supported/Hosted



### Safety Performance

#### Total Recordable Incident Rate

Incidents per 100 Full-Time Employees per Year



#### Vehicle Accident Recordable Rate<sup>12</sup>

Driver Hours Without a Vehicle-on-Vehicle Accident, in Thousands

